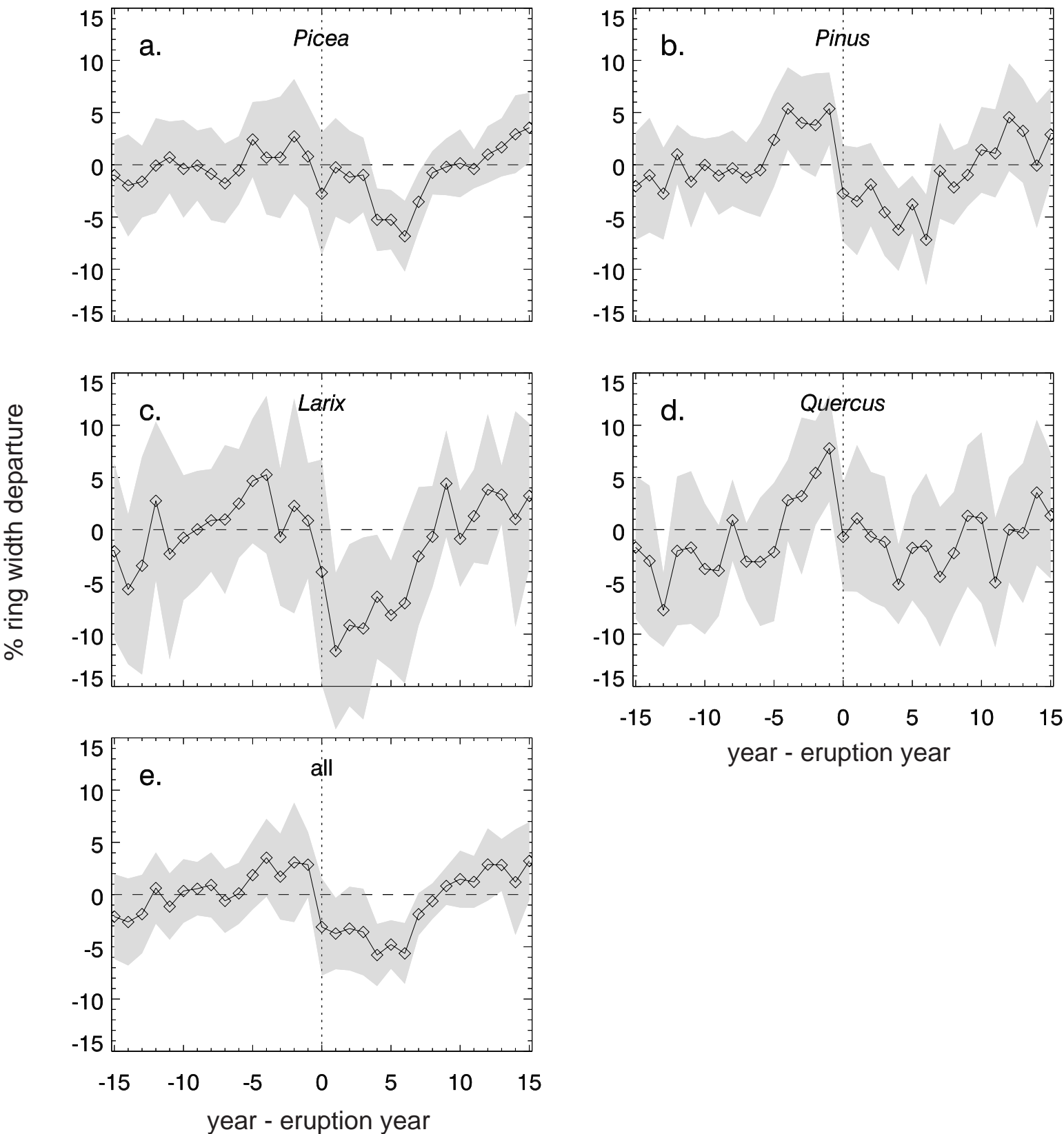


Supplementary Figure 1. Same as Figure 3 in the paper but using only eruption years since 1500 that follow within 2 years of a known large eruption (Table 1). The eruption years used are as follows: northern hemisphere, 1587, 1601, 1622, 1641, 1695, 1783, 1815, 1831, 1883, 1902; southern hemisphere, 1586, 1594, 1600, 1693, 1695, 1783, 1815, 1836, 1884, 1951, 1963. Note that the shape of width reduction north of 45deg N is quite similar to that in Figure 3.



Supplementary Figure 2. Same as Figure 4 but using only eruption years since 1500 that follow within 2 years of a known large eruption (Table 1). The years used are the northern hemisphere list in the caption to Supplementary Figure 1.